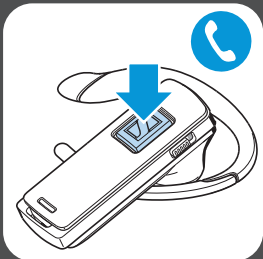
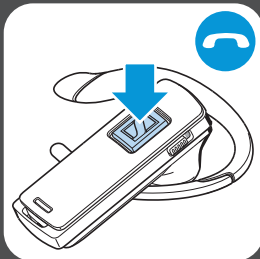


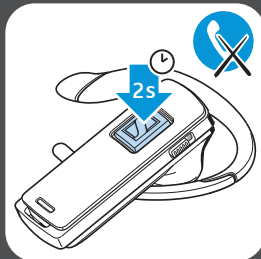
## Accepting calls



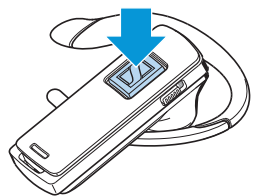
## Ending calls



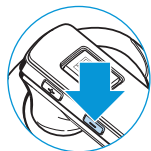
## Reject calls



## Call control features



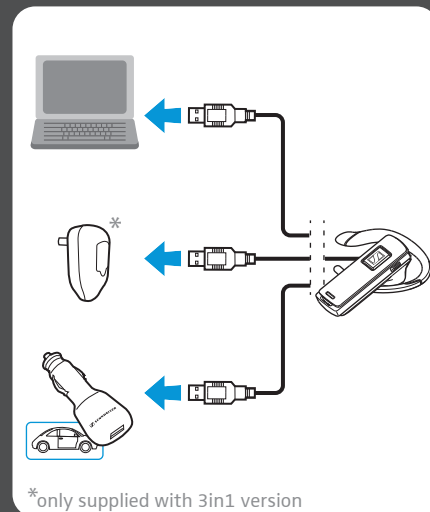
- Redial (2 taps)
- Voice dial (press for 2 seconds until you hear a beep, then release the button)
- Transfer a call from phone to headset (1 tap)  
Transfer a call from headset to phone (press for 2 seconds)
- Hold/unhold a call (2 taps)
- Reconnect lost connection (1 tap)



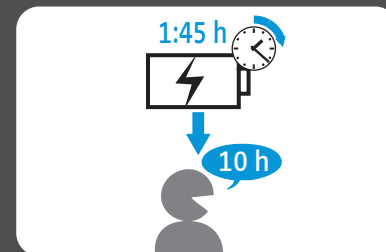
- Mute on (press Volume down button for 2 seconds)
- Mute off (press Volume down button for 2 seconds)
- Remaining talk time (press Volume up button for 2 seconds)

# Quick Guide | EZX 80

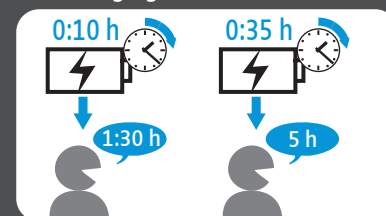
## Charging



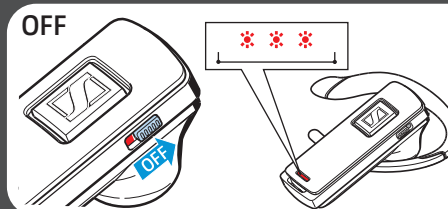
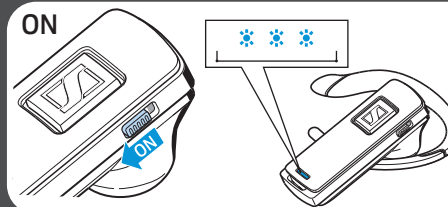
## Full charge



## Fast charging



## Power on/off

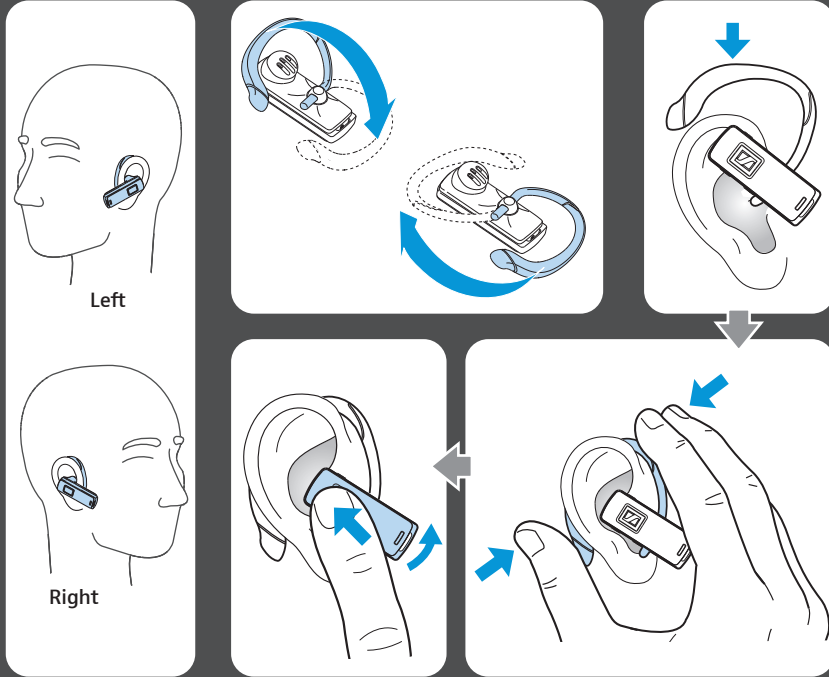


Sennheiser Communications A/S  
Langager 6, 2680 Solrød Strand, Denmark  
www.senncom.com

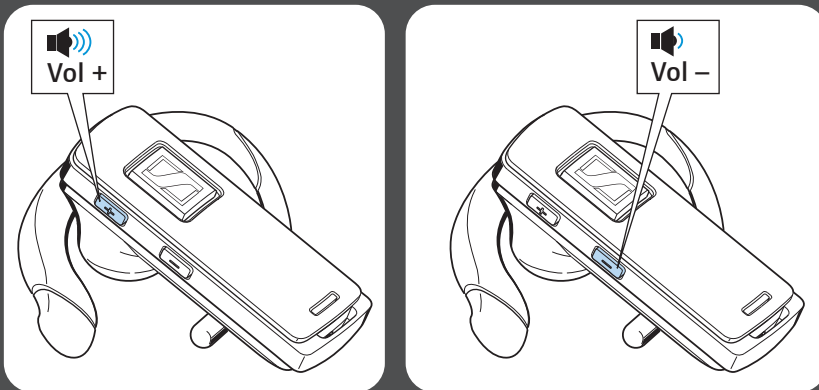
Printed in China, Publ. 06/12, A01



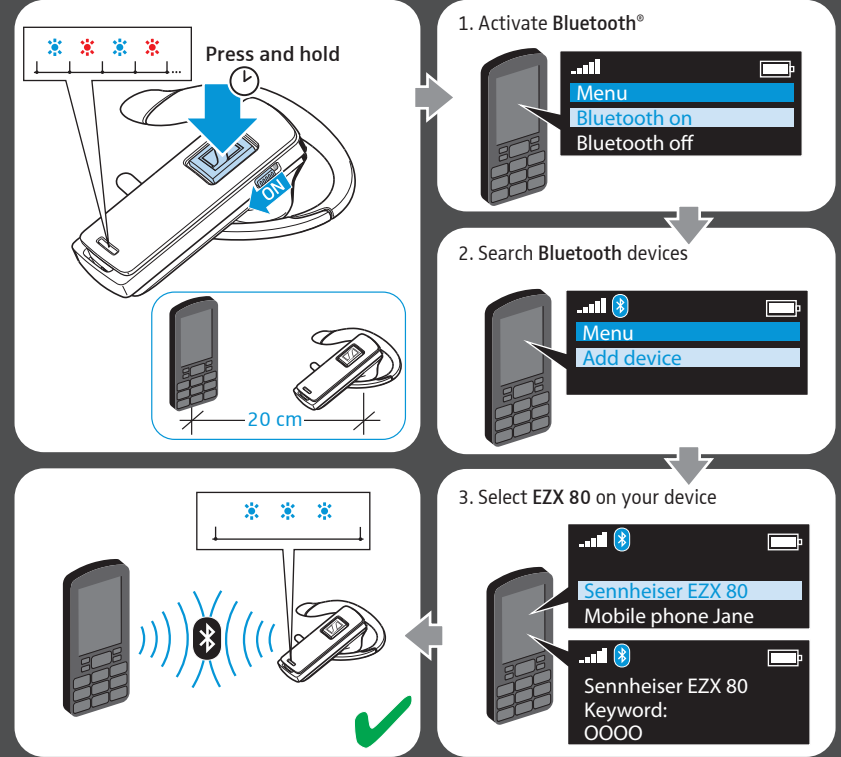
## How to wear/adjust the earhook



## Adjusting the volume



## Pairing



## How to check remaining battery life

